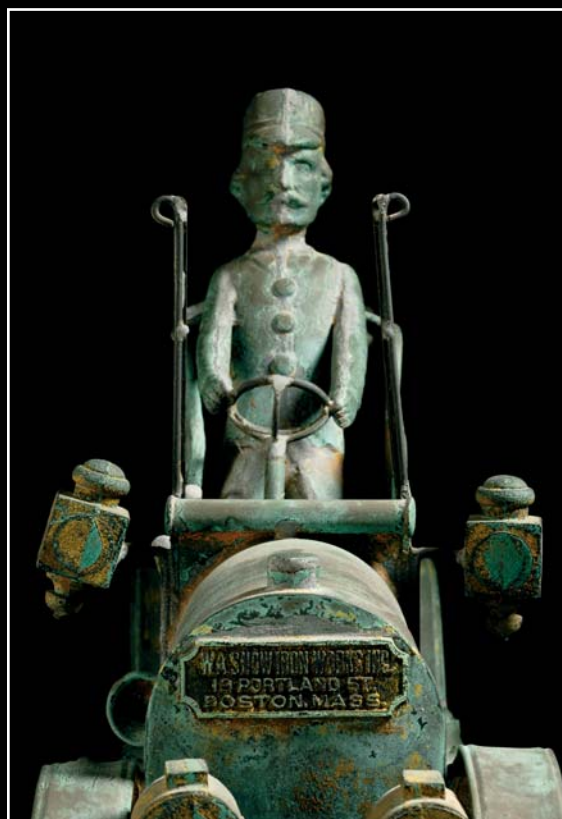


641.
Gilded Molded Copper Touring Car with Driver Weather Vane, "W.A. Snow Iron Works, Inc., 19 Portland St. Boston, Mass.," c. 1910, original verdigris weathered surface with traces of gilding, including wooden stand, (minor imperfections), ht. 18 in. from bottom of wheels, lg. 33 in.

Provenance: From an eastern Massachusetts cultural institution.

This weather vane was originally mounted on the top of the Manor Crescent Building on Bedford Street in Lexington, Massachusetts, which served as a gas station and grocery store.
\$30,000-50,000



641 and detail





642



643

642. **Zinc and Copper Standing Horse Weather Vane**, America, late 19th century, cast zinc head on figure with molded sheet copper body, with mustard-colored paint, including stand, (imperfections), overall ht. 31 1/2, lg. 31 in.

643. **Molded Copper Hackney Horse Weather Vane**, America, late 19th/early 20th century, full body sheet copper body mounted on a copper rod, including stand, overall ht. 24 3/4, lg. 33 in. \$4,000-6,000

Provenance: Collection of Robert Bishop.

Literature: Illustrated in *A Gallery of American Weathervanes and Whirligigs*, by Robert Bishop and Patricia Coblenz, Crown Publishers, New York, 1981, p. 68 and *American Country: A Style and Source Book*, by Mary Ellisor Emmerling, E.P. Dutton, New York, 1980, p. 48.

\$5,000-7,000



644

644.
Molded Copper "Hamburg" Rooster Weather Vane, attributed to L.W. Cushing & Sons, Waltham, Massachusetts, late 19th century, flattened full-bodied figure, mounted on a short copper rod, gilded surface, the comb and wattle painted black, no stand, (minor dents), ht. 27, lg. 27 1/2 in.

Note: This model appears on p. 14 in the 1883, No. 9, L.W. Cushing catalogue.

\$8,000-12,000



645.
Small Molded Sheet Copper and Cast Bronze Ethan Allen
Horse Weather Vane, America, late 19th/early 20th century,
flattened full-body figure with cast bronze head, gilt surface with
traces of verdigris, including stand, (imperfections), overall ht. 17
3/8, lg. 24 1/2 in.

\$800-1,200

646.
Gilt Copper and Zinc "Patchen" Running Horse Weather
Vane, America, late 19th/early 20th century, full-body figure
with cast zinc head, molded sheet copper body, mounted on a
copper rod, no stand, (dents, seam separations), ht. 20 1/2, lg.
42 in.

\$2,500-3,500



647.
Molded Gilt Copper and Zinc "Mountain Boy" Running Horse Weather Vane, America, late 19th/early 20th century, cast zinc head on molded flattened full-body sheet copper body, mounted on a copper rod, including stand, (minor dents), overall ht. 19 1/4, lg. 31 1/2 in.

\$1,500-2,500

648.
Painted Sheet Iron Banner Weather Vane with Cast Bronze Hand, America, late 19th century, with copper sphere finial, weathered gray painted surface, including stand, overall ht. 15 3/4, lg. 35 1/2 in.

\$1,200-1,800



649



650



651

649.
Cast Zinc and Sheet Copper Arrow Weather Vane with Pointing Hand, America, late 19th century, with traces of gilding on the surface, including stand, overall ht. 16, lg. 24 3/4 in.

\$1,500-2,500

650.
Molded Gilt Copper Eagle Weather Vane, America, late 19th century, the spreadwing figure mounted on a copper sphere and arrow, including stand, (minor imperfections), ht. 28, wd. 29, lg. 30 in.

\$800-1,200

651.
Red-painted Tinned Sheet Iron Fireman Weather Vane, America, early to mid-20th century, the figure mounted on a sheet iron arrow, including stand, overall ht. 29 3/4, wd. 34 1/4 in.

\$800-1,200

652.
Yellow-painted Cast Zinc Eagle Figure, America, early 20th century, ht. 22, wd. 17 3/4 in.

\$800-1,200



652



653



654

653.
 Scott Leighton (Maine and Massachusetts, 1849-1898)

Portrait of a Horse. Signed l.l. Oil on canvas, 18 x 14 1/2 in., in a gilt-gesso frame. Condition: Spots of retouch to background sky.

\$3,500-4,500

654.
 American School, 19th Century

Portrait of a Locomotive and Tender of the New York City and Hudson River Rail Road. Signed "R.D. Heusner" l.r. Gouache en grisaille on paperboard, 12 x 26 in., in a contemporary molded wood frame. Condition: Subtle toning, not examined out of frame.

Provenance: Collection of the Railway and Locomotive Historical Society, Inc., Baker Library, Harvard Business School, Boston, with an old label affixed to back of frame.

\$800-1,200



656

655.
American School, 19th Century

River Scene with Locomotive and Sailboats. Unsigned. Oil on canvas, 18 x 26 1/4 in., in a contemporary molded wood frame. Condition: Scattered retouch.

\$700-900

656.
Attributed to John Cordrey (British, fl. 1765-1825)

Landscape with Coach, Horses, Travelers, and Inn. Unsigned. Oil on canvas, c. 1810, 21 x 29 in., in a molded giltwood frame. Condition: Canvas applied to panel, scattered retouch.

Provenance: Purportedly Duke of Portland Collection.
\$8,000-12,000

657.
American School, 19th Century

Country Lane Winter Landscape. Unsigned. Oil on canvas, 20 x 24 in., in an ornate gilt-gesso frame. Condition: Patched repair l.c. with associated paint loss, craquelure.

\$800-1,200

658.
Federal Carved and Reeded Pine Glazed Cupboard, Bergen County, New Jersey, early 19th century, the cupboard doors with carved ovals, (restoration), ht. 87, wd. 53, dp. 19 in.
\$9,000-12,000

659.
Painted Chalkware Eagle Figure, America, 19th century, ht. 8 in.
\$400-600

660.
Red-stained Wooden Spice Chest, America, late 19th/early 20th century, with six short drawers over a long drawer, brass knobs, ht. 12 1/4, wd. 15 1/2, dp. 7 1/4 in.
\$500-700

661.
Red-painted Pine Child's Chest with Heart Cut-out Backsplash, America, late 19th century, (repair, loss to one knob), ht. 15 1/2, wd. 15 1/2, dp. 10 1/4 in.
\$800-1,200

662.
Peach-form Velvet Pincushion, America, early 19th century, ht. 3 1/2 in.
\$300-500

663.
Miniature Mahogany Chest of Drawers, America, early 19th century, shaped molding, with two short drawers over three long drawers, turned wooden knobs, (minor imperfections), ht. 13 1/2, wd. 11, dp. 7 1/2 in.
\$400-600

664.
Painted Chalkware Squirrel Figure, America, 19th century, (repair to tail tip), ht. 6 5/8 in.
\$300-400



658

665.
Paint Decorated Pine Child's Chest of Drawers, America, late 19th century, ornamented with painted strawberries and black linear borders, ht. 20, wd. 14 1/2, dp. 8 in. \$600-800

666.
Strawberry-form Velvet Pincushion, America, early 19th century, with green wool felt leaves and red and white silk ribbon, lg. 3 7/8 in. \$300-500



667.
Large Carrot-form Velvet Pincushion, America, early 19th century, lg. 13 in. including foliage.
 \$800-1,200

669.
Three Chalkware Figures, America, 19th/20th century, including an ewe and lamb, and two rabbit figures, the larger rabbit is a bank, (repair to ewe's ear), ht. 7, 5 3/4, 9 1/2 in.
 \$300-500

668.
Painted Chalkware Cat and Dog Figures, America, 19th century, (paint wear), ht. 5 1/4, 5 1/8 in.
 \$200-300

670.
Painted Chalkware Horse Figure, America, 19th century, ht. 10 3/8 in.
 \$300-500



672

671.
Strawwork Watch Hutch with Pictorial Reserve, probably England, early 19th century, wood frame with applied straw segments arranged in geometric designs, with central watercolor and gouache on paper picture of a romantic couple under a glass panel, lower drawer, (straw losses), ht. 12, wd. 5 1/4, dp. 3 3/4 in.

Provenance: Berdan Collection, sale at Cyr Auction Company, Gray, Maine, January, 28, 1998; The Susan and Mark Laracy Collection.

\$1,500-2,500

672.
Cloth Folk Art Doll, America, c. 1863, hand-sewn figure of a black gentleman, with stuffed black woven wool fabric head and body, the face with applied stuffed nose and mouth and glass button eyes, leather hands and boots; he is dressed in hand-sewn garments made of wool and cotton textiles, including a gray wool frock coat with velvet collar and brass eagle buttons, a black wool morning coat, wool plaid vest, blue wool trousers, and white cotton shirt, ht. 15 1/2 in.

Provenance: The doll is accompanied by two notes referring to the doll as "Black Sambo" and stating the doll was made in 1863 or 1864 by an ancestor of the present Badger family (of Milton, Massachusetts), and sold for the "benefit of the soldiers," it was bought by George H. Allen and given to Sarah Badger, then given by Sarah Badger to the daughters of Isabelle Badger. The doll is accompanied by a photo and tintype of George H. Allen and the two notes.

\$1,500-3,000



674

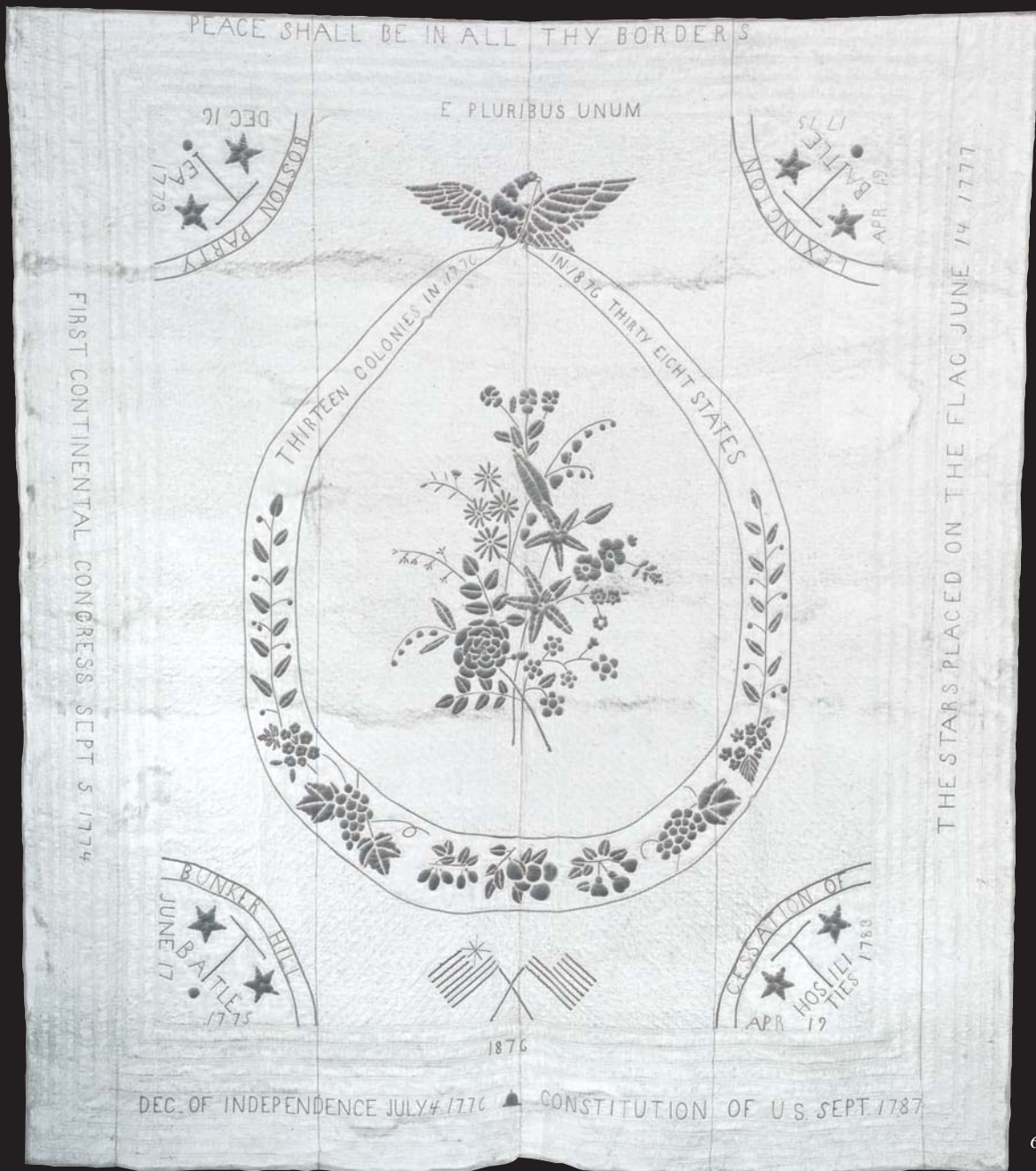
673.
In the Manner of William Aiken Walker (South Carolina, 1838-1921)

Four Cotton Plantation Scenes. Signed "Stotts," some dated 1934 or 1937. Oil on academy board, 9 x 11 and 9 x 11 3/4 in., framed. Condition: Very good, one with scratch in background sky.

\$1,200-1,500

674.
Folk Art Carved Wooden Walking Stick, America, 19th century, with motifs including a house, a man wearing a top hat, geometric and open-work segments with moving shapes within, ht. 40 in.

\$2,500-3,500



675

675.

Whitework Cotton Centennial Quilt, Mina M. Braley, Albion, New York, c. 1876, the all-white corded, stuffed, and quilted bedcover is centered with a floral spray enclosed by a banner with corded lettering reading "Thirteen Colonies in 1776" and "In 1876 38 States" with a spreadwing eagle above and grapevines within the banner, the central motif surrounded by patriotic motifs, sentiments, and events with dates stitched in corded lettering including "Peace Shall be in all Thy Borders," "E Pluribus Unum," "Boston Tea Party Dec. 16, 1773," "Bunker Hill Battle June 17, 1775," "Declaration of Independence July 4, 1776," "Constitution of the USA Sept. 17 1787," "The Stars Placed on the Flag June 19 1777," "First Continental Congress Sept. 5, 1774," "Lexington Battle April 19, 1775," and "Cessation of Hostilities April 19, 1788," with diagonal line quilt stitches in the background, backed in white woven cotton fabric, signed in double rows of stitching in lower left and right corners

"Mina M Braley Albion N.Y.," 92 x 80 in.

Provenance: Almina "Mina" Braley, the maker of the quilt, was the fifth of eight children born to Moses and Martha Miller at Berne, Albany County, New York, on August 12, 1842. She attended school at the Albion Academy and later taught school for a time in Orleans and Monroe County. She married Byron B. Braley January 6, 1869, and lived on the Braley homestead farm on which her husband was born. She died on the farm July 11, 1926 at the age of 84 and is buried alongside her husband in the Mount Albion Cemetery, Albion, New York. A photocopy of her obituary and a photo of Mina in her old age with some family members, accompany the quilt.

Note: The quilt was back-lit in the photograph to show details.
\$3,000-5,000



676.
Putty Decorated Dome-top Trunk, America, early 19th century,
(imperfections), ht. 10, wd. 24, dp. 13 in.

\$500-700

677.
Pine Grain-painted Six-board Chest, probably New England, c.
1800, old surface, (some paint wear), ht. 20 3/4, wd. 30 3/4,
dp. 18 in.

\$600-800



679

678.
Chippendale Red-painted Maple Tall Chest of Drawers,
Massachusetts or New Hampshire, late 18th century, lacks
brasses, old surface, ht. 55 3/4, wd. 36, dp. 18 in.
\$3,000-5,000

679.
**Federal Salmon-painted Poplar Glazed Two-part Corner
Cupboard**, possibly Bergen County, New Jersey, early 19th
century, old surface revealed by removal of later paint,
(imperfections), ht. 81 1/4, wd. 56, dp. 28 in.

Provenance: Patty Gagarin Antiques, Fairfield, Connecticut.
\$4,000-6,000

680.

Child's Paint-decorated Tablet-top Settee with Matching Side Chair and Rocking Chair, Pennsylvania, possibly Lehigh County, c. 1825-30, the backs freehand decorated with seashells, fruit and flowers, (one rocker replaced, imperfections), ht. 21, seat ht. 10, settee lg. 33 in.

Note: Undersides of seats stenciled with a bird motif and name, possibly that of the maker.

\$15,000-25,000



680

681.
Classical Mahogany Carved Whale End Wall Shelf with Concentric Roundels, probably New England, c. 1825, ht. 35, wd. 27 3/4, dp. 9 in.

\$800-1,200

682.
Six Carved and Painted Stone Vegetables, probably Italy, late 19th/early 20th century, including an eggplant, mushroom, red onion, bean, and two tomatoes, dia. 2 3/4-5 1/2 in.

\$400-600

683.
Attributed to Zedekiah Belknap (American, 1781-1858)

Portrait of Lyman Bradstreet Walker (1785-1857), 1825-35, unsigned, oil on canvas, 20 x 17 in., in an original gilt-gesso frame. Condition: Unrestored, craquelure.

Note: Attorney Walker practiced law in Meredith, Guilford, and Concord, New Hampshire. In 1843 he was appointed Attorney General of New Hampshire, a position he held for a five-year term. He died nine years later. His wife, Mary Hammond, had lived in Chester, Vermont, a town near Wethersfield, Vermont, where Belknap's family moved when he was 13 years old.

Provenance: The Belknap portrait of a child holding a doll that sold as lot 168 in Skinner's June 3, 2007, auction is from the same Lyman Bradstreet Walker family, New Hampshire.

\$3,000-5,000

684.
Attributed to Asahel Lynde Powers (American, 1813-1843)

Portrait of a Woman Wearing a Golden Brown Dress and Gold Jewelry. Unsigned. Oil on panel, c. 1830, 21 3/4 x 17 3/4 in., unframed. Condition: Panel bowed, scattered paint loss.

Note: Asahel Powers was born on February 28, 1813, in Springfield, Vermont, and had begun his career as a portrait artist by the time he turned 18. From 1839-1841 he worked in Clinton and Franklin counties in upstate New York. His early works were done on wood panels; later changing to canvas as he traveled further west. His early works showed heavy gray shadowing, strong outlines, and boldly painted clothing with detailed accessories. He left New York sometime after 1841 to join his parents who settled in Olney, Illinois. He died there on August 23, 1843.

\$800-1,200

685.
American School 19th Century

Portrait of a Gentleman. Unsigned. Oil on canvas, c. 1850, 36 x 29 in., in a contemporary molded giltwood frame. Condition: Relined, scattered retouch.

\$400-600



683



684



686

686.
American School, Early 19th Century

Family Portrait. Unsigned. Oil on canvas, depicting a father, mother, and two girls, the smaller holding a white kitten, seated on an Empire-style couch, 39 x 49 in., in a grain-painted frame with corner blocks. Condition: Patch repairs, minor paint loss c.l., retouch.

\$15,000-25,000

687.
American School, 19th Century

Double Portrait of a Nantucket Couple. Unsigned. Oil on canvas, 16 1/2 x 19 in., in a molded wood frame. Condition: Laid down onto Masonite, retouch.

Note: An inscription on the reverse backing paper reads: "Believed to be relatives of Elizabeth Kelly- owner of Kelly House-Edgartown. Known now as Great Harbor Inn on Kelly Street."

\$1,000-1,500



687

688.

Attributed to John Brewster, Jr. (American 1766-1854)

Portrait of Dr. Joseph Osgood of Andover and Salem, Massachusetts. Unsigned, subject identified in pencil inscriptions on the reverse of the canvas "Dr. Joseph Osgood Born Andover Nov. 25 1746, Died Salem June 1812," also indistinct pencil inscriptions on the stretcher, and on a label. Oil on canvas, 30 x 25 in., in a period molded giltwood frame. Condition: Relined, scattered retouch.

Note: Dr. Joseph Osgood, a Salem physician, was born in Andover, Massachusetts, on November 25, 1746. His father, also Joseph and a physician, was educated at Harvard. On June 14, 1770, he married Lucretia Ward (1748-1809) with whom he raised eight children. Joseph Osgood was an early member of the Medical Society of Massachusetts. Local historical records indicate that he maintained an office and apothecary on Essex Street, near the center of Salem. He died "very suddenly," according to the *Salem Gazette* on June 30, 1812.

\$1,000-1,500

689.

Set of Six Green-painted Chairs, Pennsylvania, c. 1830, with polychrome and gilt floral decoration, (some paint wear), ht. 33 1/4, seat ht. 17 1/4 in.

\$1,500-2,500



688



689



699

690. **Wool and Cotton Pictorial Hooked Rug with Bird and Nest**, America, late 19th/early 20th century, (edge losses), 27 3/4 x 37 in., mounted on a wood frame. \$400-600
691. **Wool and Cotton Floral Hooked Rug**, America, late 19th century, mounted on a wooden frame, 26 1/2 x 36 in. \$600-800
692. **Paint-decorated Three-tier Table**, possibly New England, last half 19th century, constructed of turned wooden spools and heart-shaped shelves, late 19th century fanciful paint, ht. 27 1/2, wd. 16 1/4, dp. 17 3/4 in. \$600-800
693. **Painted Game Board-decorated Spool-post Table**, New England, late 19th century, (imperfections), ht. 27, wd. 18 1/4, dp. 21 1/2 in. \$2,000-3,000
694. **Cherry Carved and Inlaid Glazed Secretary Bookcase**, Henry Sherman, 1879, old finish, (imperfections), ht. 87, wd. 40, dp. 26 in. \$1,000-1,500
695. **Blue-painted Ash Armchair**, possibly Canada, early 19th century, old surface, (minor imperfections), ht. 41, seat ht. 15 in. \$400-600
696. **Wool and Cotton Pictorial Hooked Runner**, America, early 20th century, the center field depicting birds, horses, and flowers, variegated border with leaves, (edge losses and repairs), 24 x 110 1/2 in. \$600-800
697. **Figural Wool Hooked Rug with Sheep**, America, late 19th century, the sheep figures centered on a mottled brown, black, and green ground with floral border, 29 x 38 1/2 in. \$500-700
698. **Wool Geometric Pattern Hooked Rug**, America, probably early 20th century, (minor wear), 32 x 62 in. \$200-250
699. **Paint Decorated Tinware Trunk**, America, early 19th century, dome-top trunk with hinged lid, the front panel painted white decorated with red and green tulips and flowers centered with a rectangular reserve with the name "J.M. Whitcher" painted in yellow on a black ground, the sides decorated with white bands with similar floral decoration, on a black ground with yellow foliate brushstrokes, (wear), ht. 7, wd. 10, dp. 6 1/2 in. \$800-1,200